

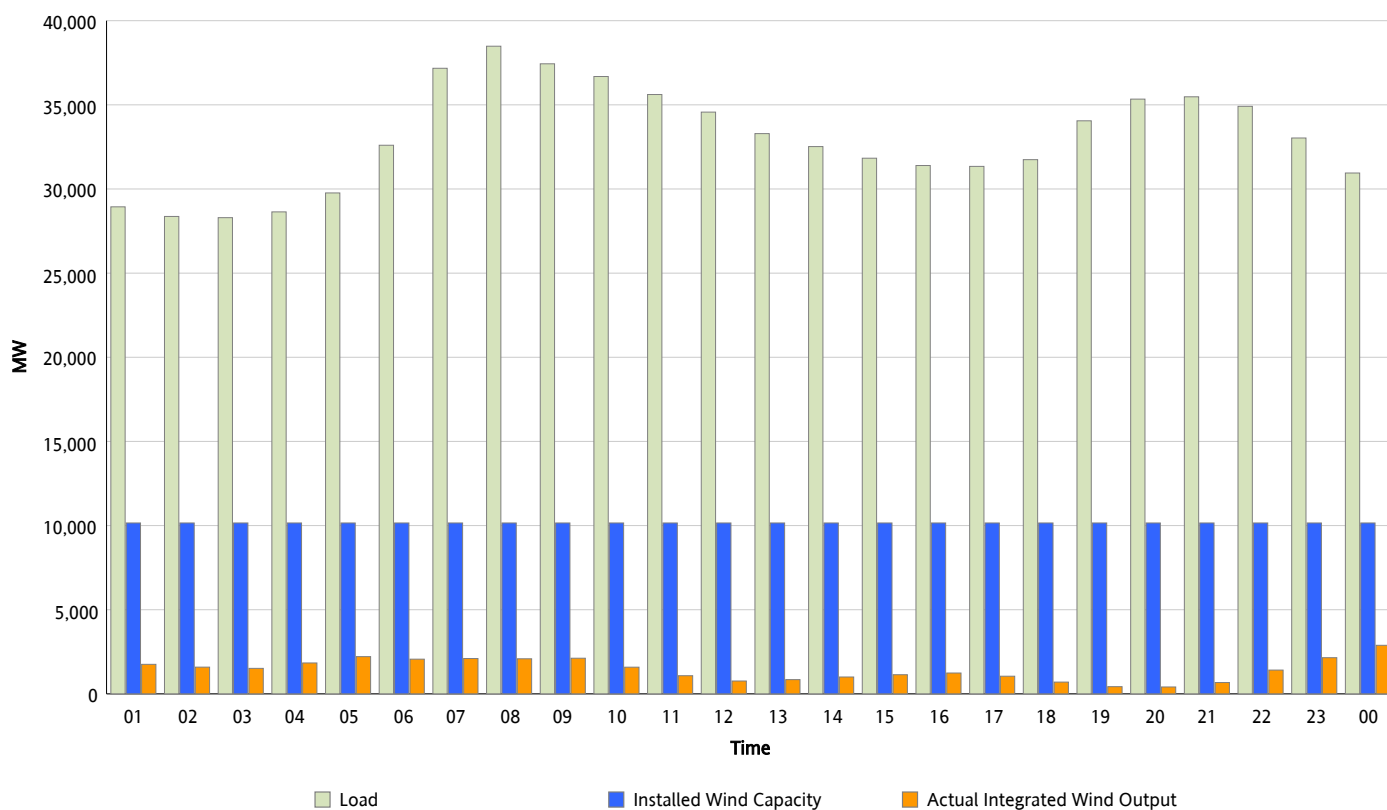


ERCOT Grid Operations

Wind Integration Report : 02/13/2013

Peak Load	38,482 MW
Load Peak Hour (HE)	08
Wind Over Peak	2,085 MW
Wind Record 02/09/13	9,481 MW
Max Wind Value*	3,174 MW
Wind Peak Time	00:00
Wind Integration %	10.53 %

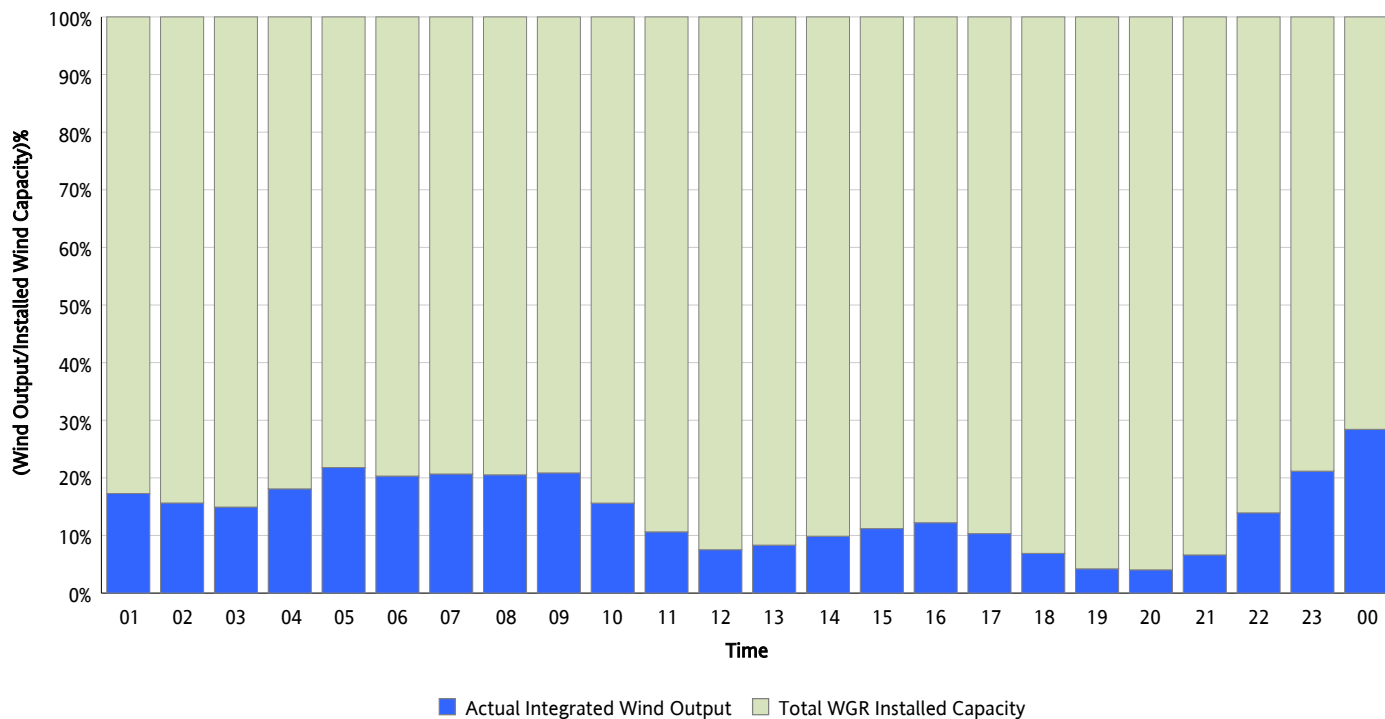
Hourly Average Actual Load vs. Actual Wind Output
02/13/2013



* Wind Record and Wind Max represent instantaneous values and the rest of the values are integrated over the hour

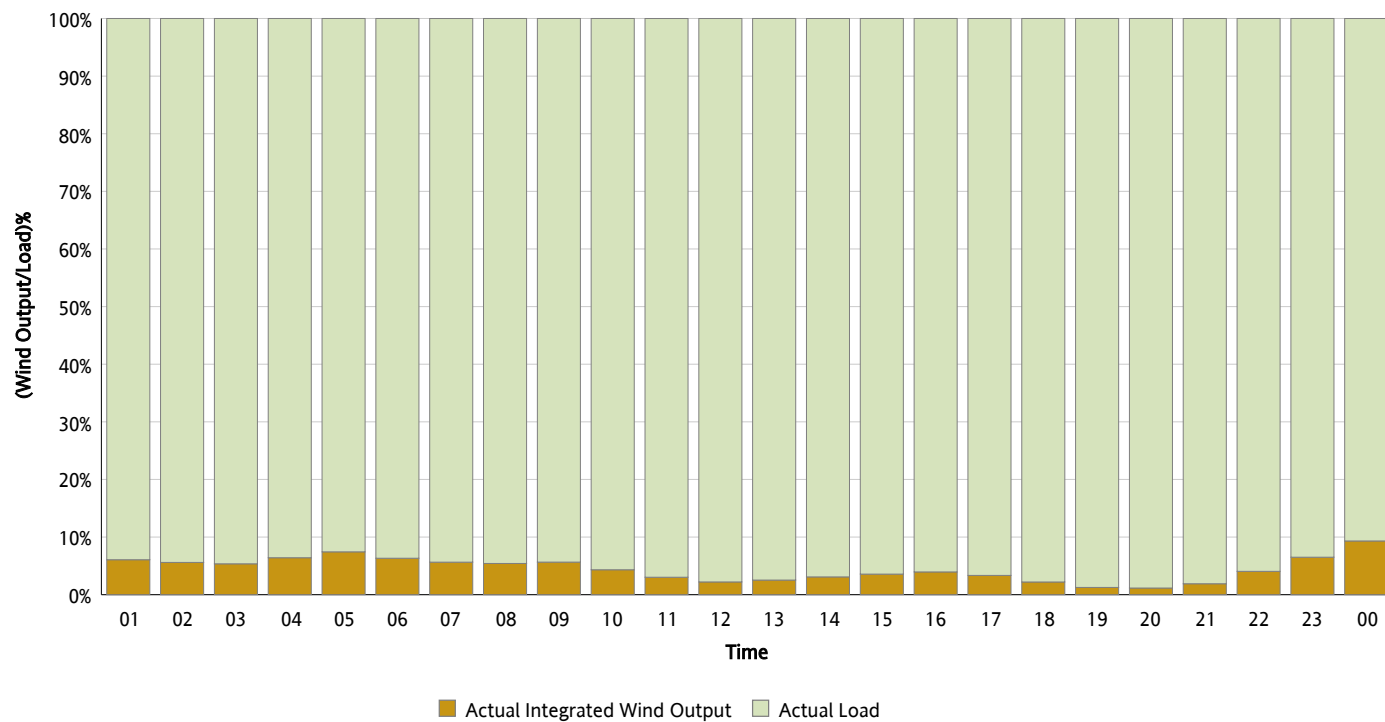
Actual Wind Output as a Percentage of the Total Installed Wind Capacity

02/13/2013



Actual Wind Output as a Percentage of the ERCOT Load

02/13/2013



ERCOT Load vs. Actual Wind Output

02/06/2013 - 02/13/2013

